

IKEDA GALLERY Tokyo

B-604, 1-4-11 Katsushima, Shinagawa, Tokyo 140-0012 JAPAN Tel : 090-6570-2141
E-mail: tokyo@akiraikedagallery.net <http://www.akiraikedagallery.com/>

KENNY SCHARF

- Early Works -

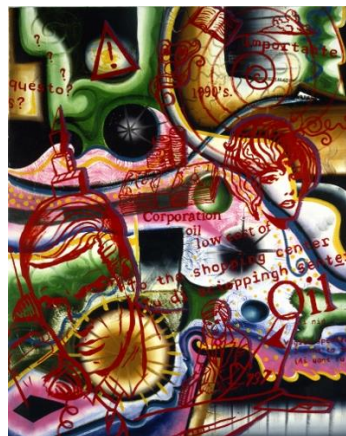
Dec.11, 2021 - Feb.25, 2022

KS-

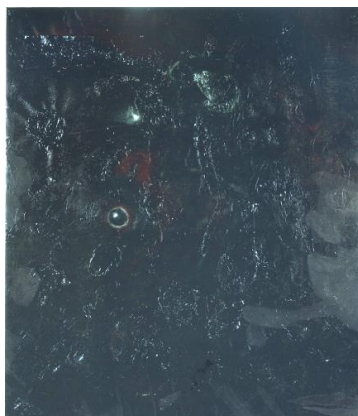
6. KENNY SCHARF
"Chunk City", 1986
oil and found objects on canvas
122x122cm



17. KENNY SCHARF
"Remember Now", 1988
acrylic and oil on canvas
142.7x114.7cm



18. KENNY SCHARF
"Dark Day", 1988
oil and gesso on canvas
153x132.6cm



IKEDA GALLERY Tokyo

B-604, 1-4-11 Katsushima, Shinagawa, Tokyo 140-0012 JAPAN Tel : 090-6570-2141
E-mail: tokyo@akiraikedagallery.net <http://www.akiraikedagallery.com/>

33. KENNY SCHARF
“Handy Dandy Andy Dance”, 2005
acrylic, oil and silkscreen on canvas
182.9x152.4cm



11. KENNY SCHARF
“Islandia Vegetado”, 1986
oil on bronze
66x58.4x58.4cm
ed. 4/6



13. KENNY SCHARF
“Extravaganza Televisione”, 1984
acrylic and found objects on 19”
Portland t.v.w/remote control
91.5x51.91.5cm



Not be exhibited

IKEDA GALLERY Tokyo

B-604, 1-4-11 Katsushima, Shinagawa, Tokyo 140-0012 JAPAN Tel : 090-6570-2141
E-mail: tokyo@akiraikedagallery.net <http://www.akiraikedagallery.com/>

14. KENNY SCHARF
“Untitled”, 1987
acrylic and found objects on
radio/cassette player
36.8x63.5x17.8cm



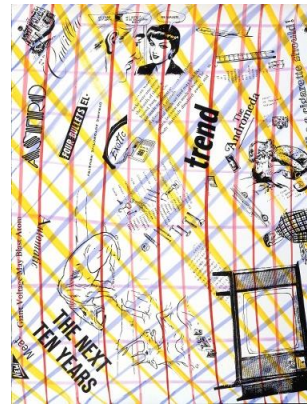
15. KENNY SCHARF
“Untitled”, 1987
acrylic and found objects on
telephone
28x15.8x10cm



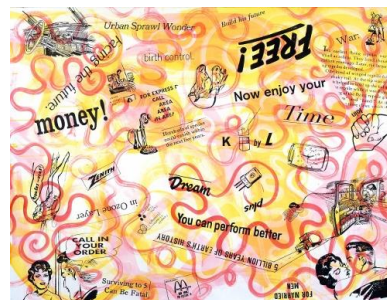
IKEDA GALLERY Tokyo

B-604, 1-4-11 Katsushima, Shinagawa, Tokyo 140-0012 JAPAN Tel : 090-6570-2141
E-mail: tokyo@akiraikedagallery.net http://www.akiraikedagallery.com/

22. KENNY SCHARF
“The Next Ten Years”, 1990
acrylic and silkscreen on paper
140.5x107.5cm



23. KENNY SCHARF
“Urban Sprawl Wonder”, 1990
acrylic and silkscreen on paper
107.5x140.5cm



24. KENNY SCHARF
“Wavelength”, 1990
acrylic and silkscreen on paper
107.5x137.5cm



27. KENNY SCHARF
“Whipsplash”, 1990
acrylic and silkscreen on paper
101x66.7cm



IKEDA GALLERY Tokyo

B-604, 1-4-11 Katsushima, Shinagawa, Tokyo 140-0012 JAPAN Tel : 090-6570-2141
E-mail: tokyo@akiraikedagallery.net http://www.akiraikedagallery.com/

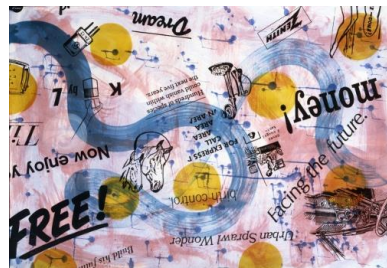
28. KENNY SCHARF
“Enjoy”, 1990
acrylic and silkscreen on paper
101x66.7cm



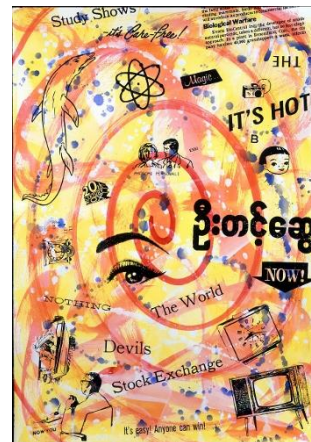
29. KENNY SCHARF
“Astroplat”, 1990
acrylic and silkscreen on paper
102x65.7cm



30. KENNY SCHARF
“Free!”, 1990
acrylic and silkscreen on paper
70.5x100cm



31. KENNY SCHARF
“It's Hot”, 1990
acrylic and silkscreen on paper
100x70.5cm



IKEDA GALLERY Tokyo

B-604, 1-4-11 Katsushima, Shinagawa, Tokyo 140-0012 JAPAN Tel : 090-6570-2141

E-mail: tokyo@akiraikedagallery.net http://www.akiraikedagallery.com/

KENNY SCHARF : Prints

KENNY SCHARF

"Light", 1988/89

portfolio of seven prints

1. Shoot Shot

lithograph, 9 plates, 9 colors

2. Fifteen Minutes

lithograph, 8 plates, 8 colors

3. Moshi-moshi

lithograph, 9 plates, 9 colors

4. Audio-Visual

lithograph, 8 plates, 8 colors

5. T.V. Totem

lithograph, 8 plates, 8 colors

6. On the Road to Fuji-yama

lithograph, 8 plates, 8 colors

7. Sayonara Flash

lithograph, 11 plates, 11 colors

paper: Velin Arches Blanc 76.3x56.3cm

ink: Toyo Ink, Teikoku Ink

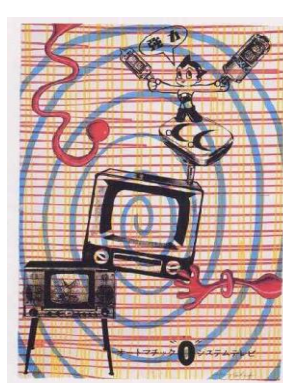
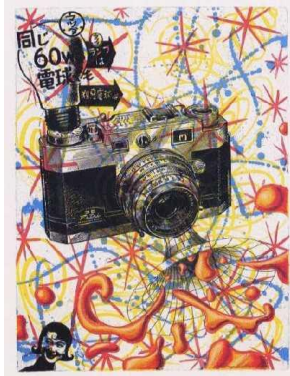
edition: 50

proofs: 5A.P., 2P.P., 1H.C., 1B.A.T.

signed and dated lower right

printed by Akagawa Print Workshop

published by AC&T Corporation



Not be exhibited

IKEDA GALLERY Tokyo

B-604, 1-4-11 Katsushima, Shinagawa, Tokyo 140-0012 JAPAN Tel : 090-6570-2141

E-mail: tokyo@akiraikedagallery.net <http://www.akiraikedagallery.com/>

KENNY SCHARF

“Dark”, 1988/89

portfolio of seven prints

1. Japan Fukuzatsu-kaiki
lithograph, 7 plates, 7 colors

2. Wired
lithograph, 6 plates, 6 colors

3. Bad Girls
lithograph, 10 plates, 9 colors

4. Foot Exercise Festival
lithograph, 7 plates, 7 colors

5. Pray for Money
lithograph, 9 plates, 8 colors

6. Animal Heaven
lithograph, 7 plates, 7 colors

7. Vacation in Space
lithograph, 9 plates, 9 colors

paper: Velin Arches Blanc 76.3x56.3cm

ink: Toyo Ink, Teikoku Ink

edition: 50

proofs: 5A.P., 2P.P., 1H.C., 1B.A.T.

signed and dated lower right

printed by Akagawa Print Workshop

published by AC&T Corporation



Not be exhibited

IKEDA GALLERY Tokyo

B-604, 1-4-11 Katsushima, Shinagawa, Tokyo 140-0012 JAPAN Tel : 090-6570-2141

E-mail: tokyo@akiraikedagallery.net <http://www.akiraikedagallery.com/>

KENNY SCHARF

"Globolution", 1988/89

portfolio of five prints

I - aquatint, 2 plates, 2 colors

II - aquatint, 2 plates, 4 colors

III - aquatint, 2 plates, 6 colors

IV - aquatint, 4 plates, 8 colors

V - aquatint, 4 plates, 8 colors

paper: Velin Arches Blanc 76.9x63.2cm

image size: 52.5x45.2cm

ink: Lefranc & Bourgeois etching inks

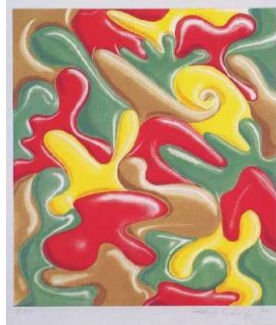
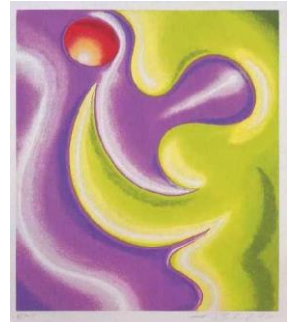
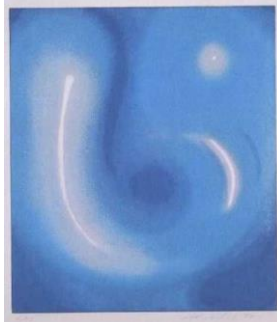
edition: 30

proofs: 3A.P., 2P.P., 1H.C., 1B.A.T.

signed and dated lower right

printed by Akagawa Print Workshop

published by AC&T Corporation



Not be exhibited